



INTRODUCTION

Cawthron Laboratory Services is providing customised analytical solutions to clients through its specialised method development team.

The team comprises highly experienced technical staff and the latest available instrumentation for contractual method development, validation of existing analytical methods, and general chemical and laboratory consultancy services.

WHAT IS CAWTHRON?

- A science provider to New Zealand industry for more than 80 years
- A large provider of contract R&D to the New Zealand food and nutraceutical industry
- Large enough to provide the latest analytical technology - including LC-MS and UPLC
- Small enough to provide personalised service
- If you want to discuss cutting-edge analytical services with experts, contact us

WHY DO YOU NEED THIS SERVICE?

- You have an analytical problem and need an answer now.
- You can't find a science provider who will help today.
- You just want to do a small project to prove an idea.
- You haven't got the time but always wanted to try something new in your process or analysis.
- You are working with natural products and need a chemist.

Clients will receive a workable solution that can be readily transferred to their situation in a timely manner. Cawthron can facilitate access to Government funding for many types of research and development projects. Call us for more information.



TECHNICAL EXPERIENCE

Cawthron's team of experts comprises six technical consultants, one Senior Scientist, Dr Patrick Holland, and is managed by our Technical Manager, Paul McNabb.

Dr Patrick Holland is recognised for his work in method development and validation for instrumental methods of analysis in trace analytical chemistry, with specialisation in GC-MS and LC-MS instrumentation.

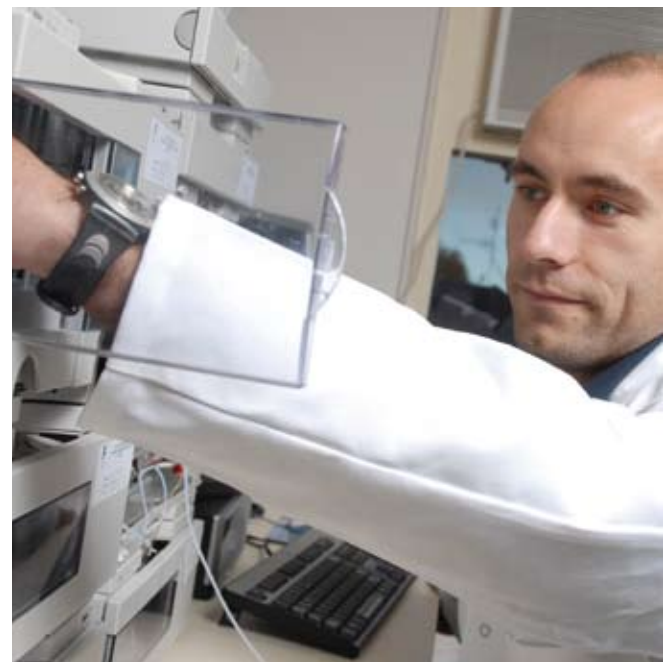
The technical consultants have extensive experience in analytical chemistry, analytical method development and validation, chemical isolation, characterisation, synthetic organic chemistry, food technology, GMP certified manufacturing, natural product chemistry, natural toxins and vitamins.

INSTRUMENTATION

Laboratory staff are well versed in the complexities of method development, quality control and maintenance of MS (LC-MS and GCMS). This LC-MS technology is becoming the mainstay for reliable cost-effective multi-analyte testing of food including, vitamins, nutraceuticals and other trace components.

The team also has access to the following instrumentation:

- High Performance Liquid Chromatography (HPLC/UPLC)
- Preparative LC
- Gas Chromatography (GC/GCMS)
- FT - infra-red spectrometry
- Thin layer chromatography
- CO₂ Supercritical extraction





Dairy Goat Co-op NZ



Photo: Wayne Barrar

CASE STUDIES

Cawthron Laboratory Services recently assisted the Hamilton-based Dairy Goat Co-operative (NZ) Ltd (DGC) by developing a method for quantifying natural levels of sialic acid in goat milk products. DGC produces infant formula products from goats' milk.

It is believed that supplementary sialic acid, a compound found in human milk, and in high concentrations in brain gangliosides, may be important for the development of infants in the early months.

“Having the expertise and capability to respond to our specific needs for developing and running non-standard assays such as sialic acid was very beneficial to us”, says Dr Colin Prosser, Chief Scientific Officer, DGC. “That this capability is available at a laboratory in New Zealand is also highly desirable.”

The new method devised by Cawthron Laboratory Services for DGC is now also available for routine testing.

Another recent example is work done with Soperex Nutritionals Ltd (SNL), a biotechnology company based at The Centre for Innovation in Dunedin. Cawthron used LC-MS technology and staff expertise to quantify several bioactive compounds in natural extracts undergoing development as functional food ingredients, and developed a method that is now available on a routine basis for the company. “Cawthron’s investment in cutting-edge instrumentation combined with their expertise and customer responsiveness, have been key factors in the success of this project to date,” Andrew Sansom, Chief Scientific Officer for SNL.

SERVICE INFORMATION & CONTACTS

For further information on these services please contact:

Paul McNabb

Technical Manager

Cawthron Laboratory Services

Telephone: 03 548 2319

Email: lab@cawthron.org.nz

Web: www.cawthron.org.nz



Photo: Wayne Barrar

CONTACT DETAILS

For enquiries please contact Cawthron Laboratory Services
Telephone Nelson: 03 548 2839
Telephone Blenheim: 03 579 2270
Facsimile: 03 546 9464

Email: lab@cawthron.org.nz
Web: www.cawthron.org.nz
Cawthron, 98 Halifax Street East, Private Bag 2,
Nelson 7042, New Zealand



CAWTHRON